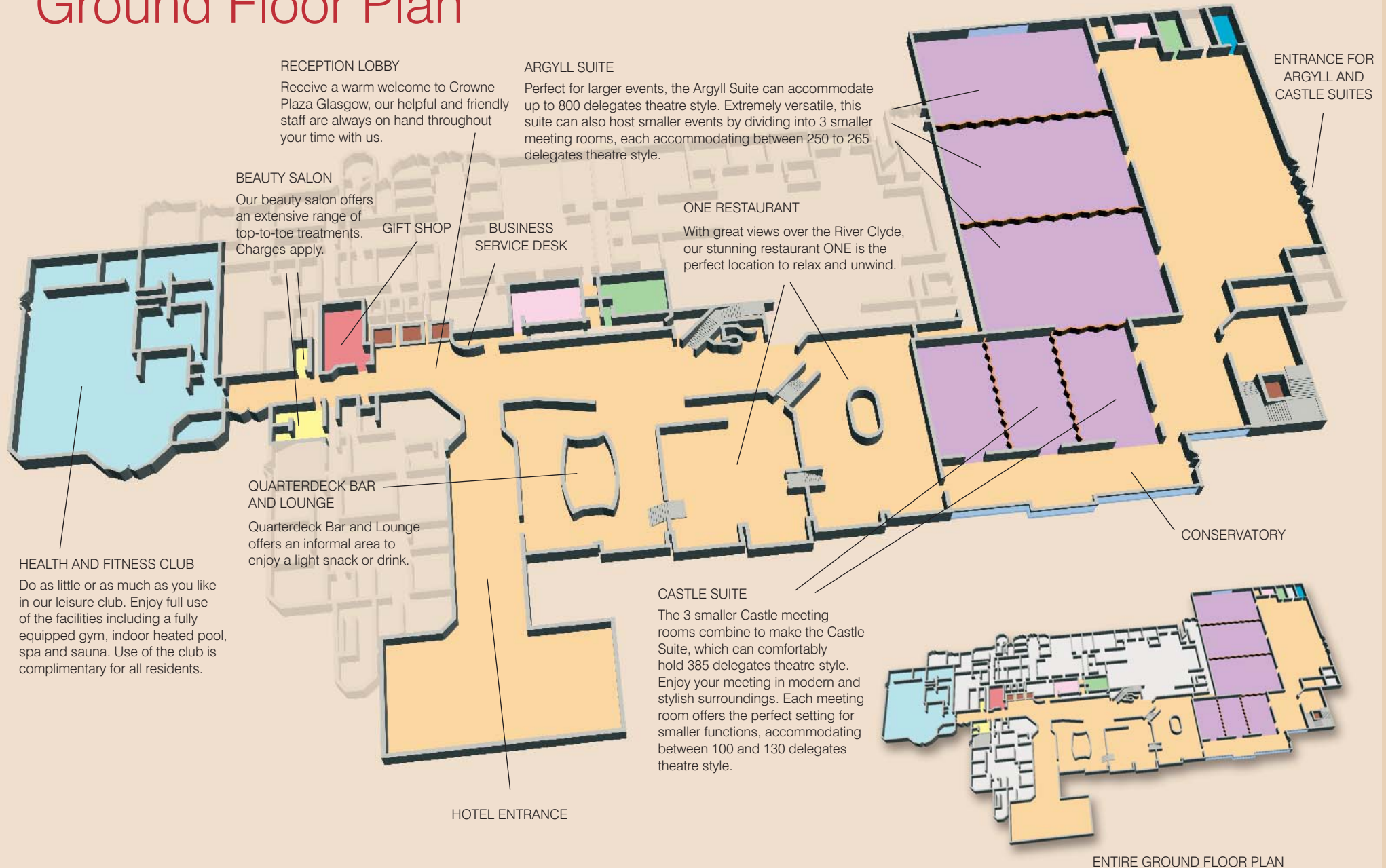
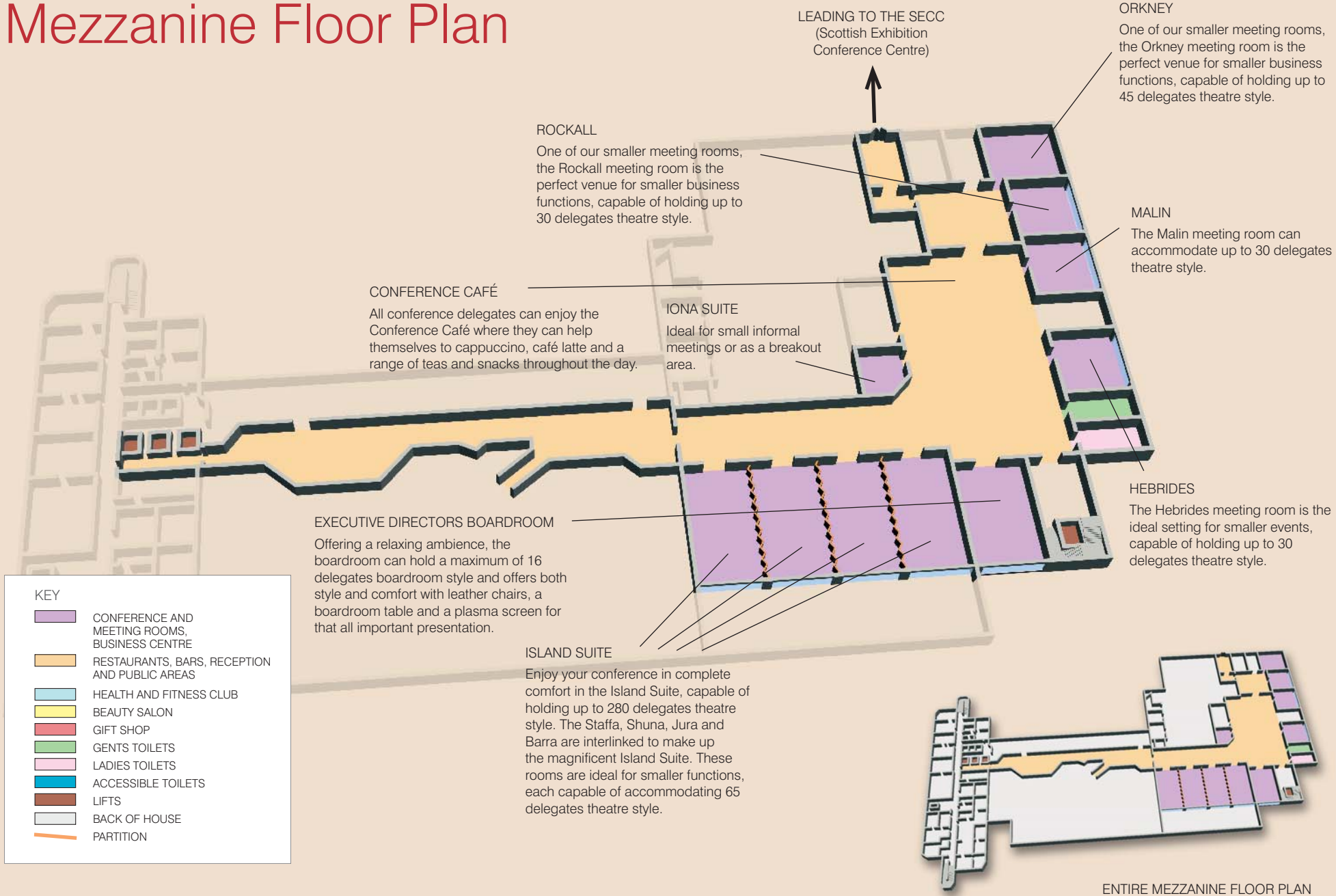


# Ground Floor Plan



# Mezzanine Floor Plan



LEADING TO THE SECC  
(Scottish Exhibition  
Conference Centre)

**ORKNEY**  
One of our smaller meeting rooms, the Orkney meeting room is the perfect venue for smaller business functions, capable of holding up to 45 delegates theatre style.

**ROCKALL**  
One of our smaller meeting rooms, the Rockall meeting room is the perfect venue for smaller business functions, capable of holding up to 30 delegates theatre style.

**MALIN**  
The Malin meeting room can accommodate up to 30 delegates theatre style.






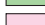





**CONFERENCE CAFÉ**  
All conference delegates can enjoy the Conference Café where they can help themselves to cappuccino, café latte and a range of teas and snacks throughout the day.

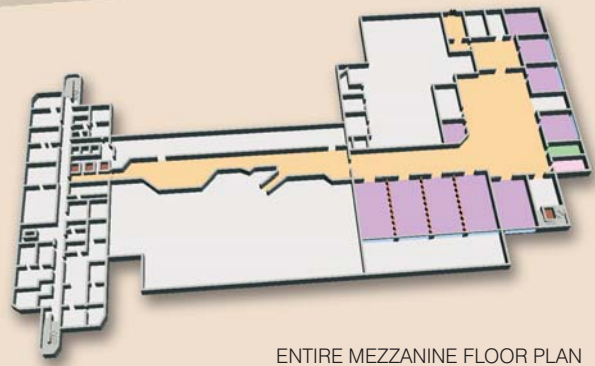
**IONA SUITE**  
Ideal for small informal meetings or as a breakout area.

**HEBRIDES**  
The Hebrides meeting room is the ideal setting for smaller events, capable of holding up to 30 delegates theatre style.

**EXECUTIVE DIRECTORS BOARDROOM**  
Offering a relaxing ambience, the boardroom can hold a maximum of 16 delegates boardroom style and offers both style and comfort with leather chairs, a boardroom table and a plasma screen for that all important presentation.

**ISLAND SUITE**  
Enjoy your conference in complete comfort in the Island Suite, capable of holding up to 280 delegates theatre style. The Staffa, Shuna, Jura and Barra are interlinked to make up the magnificent Island Suite. These rooms are ideal for smaller functions, each capable of accommodating 65 delegates theatre style.

KEY	
	CONFERENCE AND MEETING ROOMS, BUSINESS CENTRE
	RESTAURANTS, BARS, RECEPTION AND PUBLIC AREAS
	HEALTH AND FITNESS CLUB
	BEAUTY SALON
	GIFT SHOP
	GENTS TOILETS
	LADIES TOILETS
	ACCESSIBLE TOILETS
	LIFTS
	BACK OF HOUSE
	PARTITION



ENTIRE MEZZANINE FLOOR PLAN

Room	Floor area length x width (metres)	Floor area length x width (feet)	Max. ceiling height (feet & metres)	Theatre (back projection)	Reception	Classroom (back projection)	Cabaret (back projection)	Boardroom	U-Shape	Dinner/Dance	Lunch/Dinner	Floor Level	Air Conditioning	Black-Out	Natural Light	Wireless Internet Access	3 Phase Electricity Supply
<b>Argyll Suite</b>																	
Argyll Suite*	18.3 33	60 108	16 4.9	800 (600)	1000	408 (288)	528 (336)	N/A	N/A	520	660	Ground	Yes	Yes	No	Yes	Yes
Argyll Suite 2 sections	18.3 22	60 72	16 4.9	550 (350)	500	220 (N/A)	N/A	N/A	N/A	320		Ground	Yes	Yes	No	Yes	Yes
Argyll Suite 1 section	18.3 11	60 36	16 4.9	250 (200)	220	160 (112)	144 (96)	60	84	120	180	Ground	Yes	Yes	No	Yes	Yes
<b>Castle Suite</b>																	
Castle Suite**	12.8 20.5	42 68	9 2.8	385 (N/A)	300	192 (128)	192 (160)	62	80	200	260	Ground	Yes	Yes	Yes	Yes	Yes
Castle II or III	12.8 6	42 20	8 2.6	100 (N/A)	80	48 (N/A)	48 (N/A)	36	40	N/A	80	Ground	Yes	Yes	Yes	Yes	Yes
Castle I	12.8 8.5	42 28	8 2.6	130 (N/A)	110	112 (64)	80 (48)	36	48	N/A	100	Ground	Yes	Yes	Yes	Yes	Yes
<b>Meeting Centre</b>																	
Island Suite***	9.1 23	30 76	8 2.6	280 (N/A)	220	192 (128)	168 (144)	66	88	180	210	Mezz	Yes	Yes	Yes	Yes	Yes
3 Island Suites	9.1 17	30 57	8 2.6	210 (N/A)	165	112 (80)	120 (96)	50	48	100	150	Mezz	Yes	Yes	Yes	Yes	Yes
2 Island Suites	9.1 11	30 38	8 2.6	140 (N/A)	110	80 (N/A)	56 (N/A)	36	36	N/A	120	Mezz	Yes	Yes	Yes	Yes	Yes
1 Island Suite	9.1 5.8	30 19	8 2.6	65 (N/A)	50	36 (N/A)	32 (N/A)	26	26	N/A	40	Mezz	Yes	Yes	Yes	Yes	Yes
E.D.B.	9.8 5.5	32 18	8 2.6	N/A	N/A	N/A	N/A	16	N/A	N/A	N/A	Mezz	Yes	Yes	Yes	Yes	Yes
Rockall	6 5.2	20 17	8 2.6	30 (N/A)	25	18 (N/A)	20 (N/A)	12	12	N/A	16	Mezz	Yes	Yes	Yes	Yes	Yes
Malin	6 5.2	20 17	8 2.6	30 (N/A)	25	18 (N/A)	20 (N/A)	12	12	N/A	16	Mezz	Yes	Yes	Yes	Yes	Yes
Hebrides	6 5.2	20 17	8 2.6	30 (N/A)	25	18 (N/A)	20 (N/A)	12	12	N/A	16	Mezz	Yes	Yes	Yes	Yes	Yes
Orkney	6.7 5.2	22 17	7 2.4	45 (N/A)	40	18 (N/A)	25 (N/A)	24	20	N/A	30	Mezz	Yes	Yes	No	Yes	Yes

E.D.B. Executive Directors Boardroom. \*Argyll I, II, and III combined have a total area of 604m<sup>2</sup>. \*\*Castle I, II, and III combined have a total area of 262m<sup>2</sup>.

\*\*\* The Island Suite is made up of the Staffa, Shuna, Jura and Barra and combined they have a total area of 211m<sup>2</sup>.

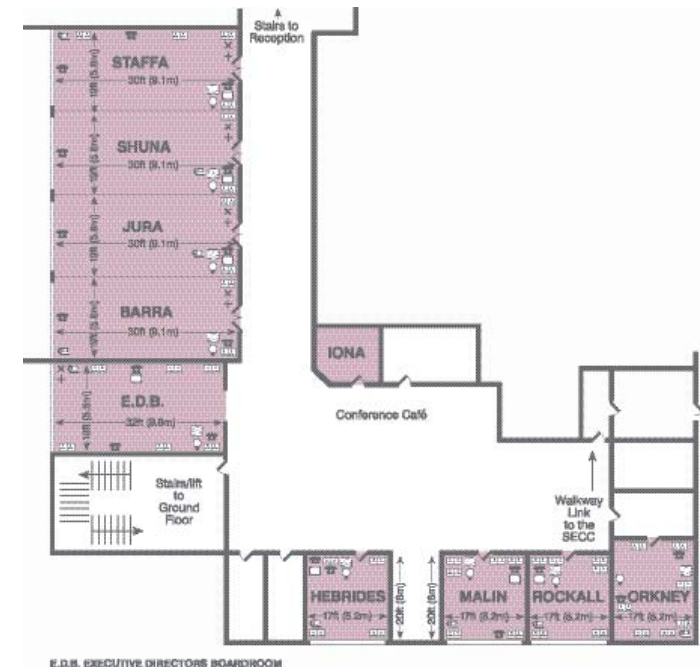
#### ACCESS FOR ALL.

Crowne Plaza Glasgow understands that every customer has different needs and we aim to make our hotel facilities available and accessible to all of our guests equally. In rare instances where this is not possible, we will endeavour to offer a suitable alternative. Our hotel offers a range of facilities for guests, including; designated blue badge car parking, accessible entrance, accessible WC, accessible bedrooms, menus available in large print, induction loops, and assistance dogs welcome. On making a reservation, please advise us if you have any specific access needs.

# Mezzanine Floor

## ISLAND SUITE

Staffa, Shuna, Jura & Barra combined



E.D.B. EXECUTIVE DIRECTORS BOARDROOM

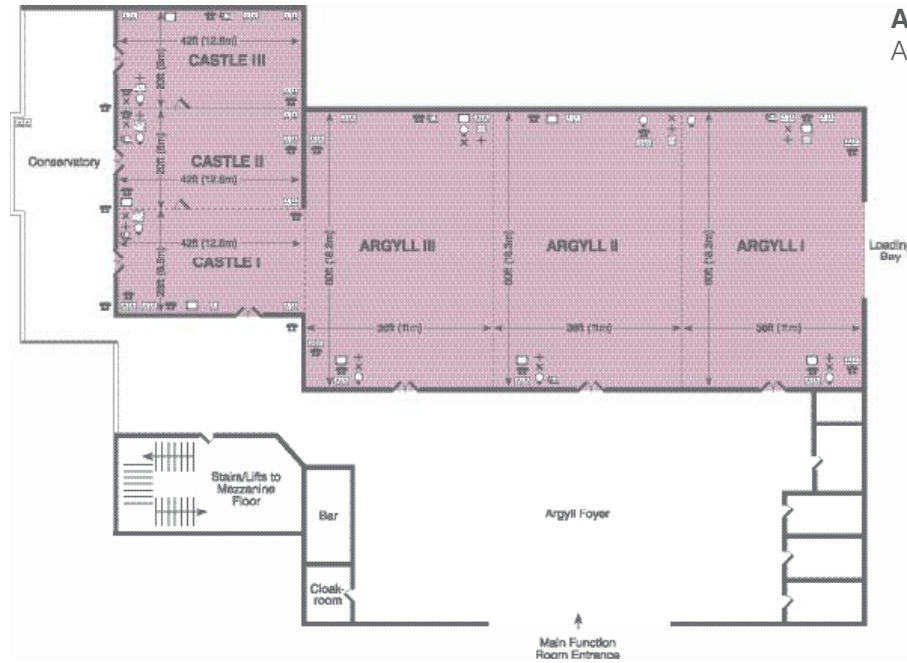
# Ground Floor

## CASTLE SUITE

Castle I, II & III combined

## ARGYLL SUITE

Argyll I, II & III combined



### KEY

- |                      |                            |                           |
|----------------------|----------------------------|---------------------------|
| Single 13 amp socket | ISDN socket                | Air-conditioning controls |
| Double 13 amp socket | 3 Phase electricity supply | Light controls            |
| Telephone point      | Microphone point           | Moveable partition        |
| TV aerial            | Volume control             |                           |



## How to find Crowne Plaza Glasgow

### By road

From the M8 North or Southbound: Exit at Junction 19 and follow the signs for the Scottish Exhibition and Conference Centre (SECC). The hotel is adjacent to the Exhibition Centre on Congress Road.

### By rail

Glasgow Central 1 mile.

### By air

Glasgow International Airport 8 miles.



### Crowne Plaza Glasgow

★★★★



Congress Road, Glasgow,  
Strathclyde G3 8QT  
Tel: 0870 4431 691  
Fax: 0141 2212 022

Email: [cpglasgow@qmh-hotels.com](mailto:cpglasgow@qmh-hotels.com)  
[crowneplaza.com/cpglasgow](http://crowneplaza.com/cpglasgow)

